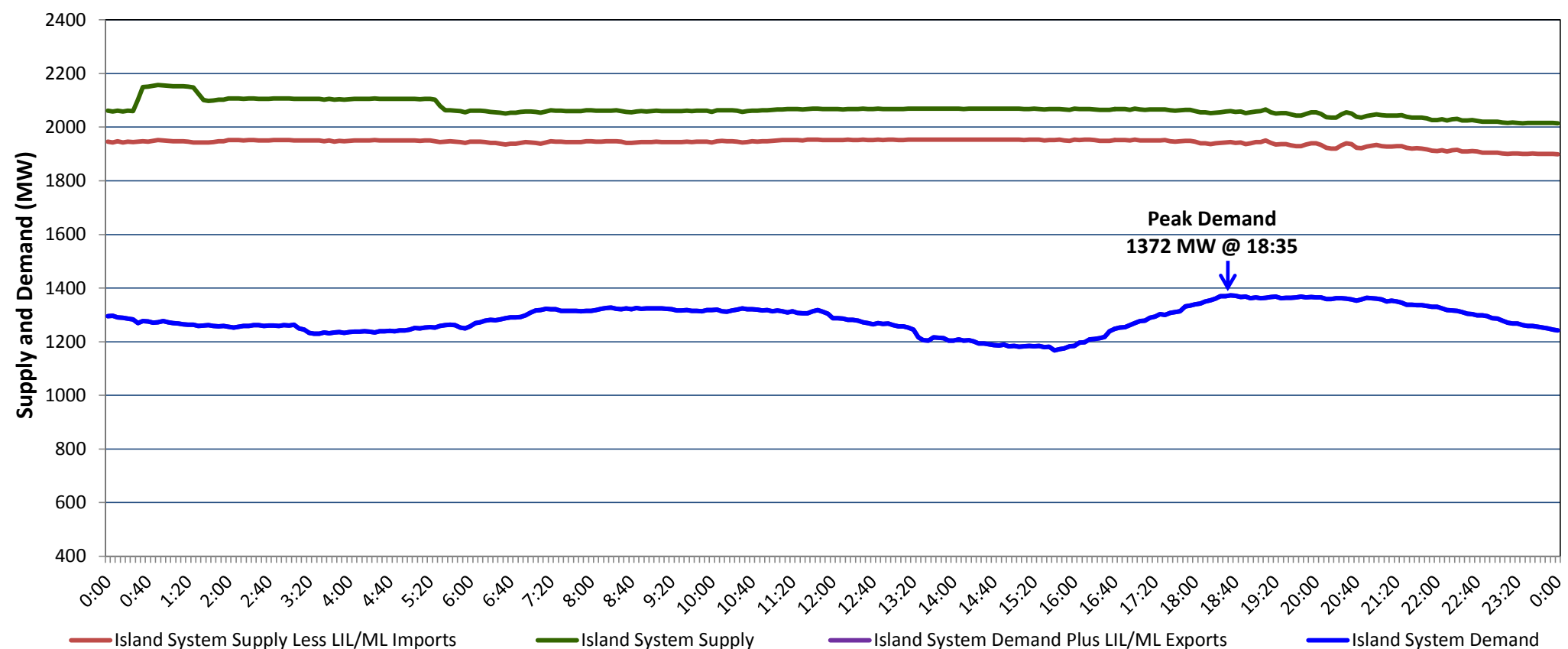


**Newfoundland Labrador Hydro (NLH)
Supply and Demand Status Report Filed Monday, March 04, 2019**

**Section 1
Island Interconnected System Supply, Demand & Exports
Actual 24 Hour System Performance For Saturday, March 02, 2019**



Supply Notes For March 02, 2019

1,2

- A As of 0409 hours, February 27, 2019, Bay d'Espoir Unit 5 unavailable (76.5 MW).
B As of 1003 hours, February 27, 2019, Hardwoods Gas Turbine available at 25 MW (50 MW).

**Section 2
Island Interconnected Supply and Demand**

Sun, Mar 03, 2019	Island System Outlook ³		Seven-Day Forecast	Temperature (°C)		Island System Daily Peak Demand (MW)	
				Morning	Evening	Forecast	Adjusted ⁷
Available Island System Supply: ⁵	2,015	MW	Sunday, March 03, 2019	-9	-5	1,545	1,441
NLH Island Generation: ⁴	1,590	MW	Monday, March 04, 2019	-6	-3	1,540	1,436
NLH Island Power Purchases: ⁶	125	MW	Tuesday, March 05, 2019	3	-4	1,485	1,382
Other Island Generation:	185	MW	Wednesday, March 06, 2019	-5	-4	1,500	1,397
ML/LIL Imports:	115	MW	Thursday, March 07, 2019	-8	-10	1,585	1,481
Current St. John's Temperature & Windchill:	-7 °C	-12 °C	Friday, March 08, 2019	-10	-8	1,595	1,491
7-Day Island Peak Demand Forecast:	1,595	MW	Saturday, March 09, 2019	-6	-5	1,205	1,105

Supply Notes For March 03, 2019

3

- Notes:
1. Generation outages for running and corrective maintenance are included. These are not unusual for power system operations. They generally do not impact customer supply. The power system operators schedule outages to system equipment whenever possible to coincide with periods when customer demands are low and sufficient supply reserves are available. However, from time to time equipment outages are necessary and reserves may be impacted.
 2. Due to the Island system having no synchronous connections to the larger North American grid, when there is a sudden loss of large generating units there may be a requirement for some customer's load to be interrupted for short periods to bring generation output equal to customer demand. This automatic action of power system protection, referred to as under frequency load shedding (UFLS), is necessary to ensure the integrity and reliability of system equipment. Under frequency events have typically occurred 5 to 8 times per year on the Island Interconnected System and the resultant customer load interruptions are generally less than 30 minutes. With the activation of the Maritime Link frequency controller during the winter of 2018, UFLS events have occurred less frequently.
 3. As of 0800 Hours.
 4. Gross output including station service at Holyrood (24.5 MW) and improved NLH hydraulic output due to water levels (35 MW).
 5. Gross output from all Island sources (including Note 4).
 6. NLH Island Power Purchases include: CBPP Co-Gen, Nalcor Exploits, Rattle Brook, Star Lake, Wind Generation and capacity assistance (when applicable).
 7. Adjusted for curtailable load, market activities and the impact of voltage reduction when applicable.

**Section 3
Island Peak Demand Information
Previous Day Actual Peak and Current Day Forecast Peak**

Sat, Mar 02, 2019	Actual Island Peak Demand ⁸	18:35	1,372 MW
Sun, Mar 03, 2019	Forecast Island Peak Demand		1,545 MW

- Notes: 8. Island Demand / LIL / ML Exports (where applicable) is supplied by NLH generation and purchases, plus generation owned and operated by Newfoundland Power and Corner Brook Pulp & Paper (Deer Lake Power, DLP).